



Electrolux
PROFESSIONAL

Modular Cooking Range Line
thermaline 90 - 800 mm Holding
Cabinet with 2 drawers, GN conform, 1
Side - H=450

ITEM #

MODEL #

NAME #

SIS #

AIA #



589467 (MC0ACAHOBO)

Holding Cabinet, with 2
drawers, one-side operated,
GN

Short Form Specification

Item No.

800 mm wide holding cabinet with 2 drawers, for holding and cooking food. Internal frame for heavy duty sturdiness in stainless steel. Flat surface construction, easily cleanable. Temperature in the cabinet can be set through thermostat, up to a maximum of 120°C. Cabinet storage space accepts GN 1/1 containers, 150mm deep.

IPX5 water resistant certification.

Configuration: One-side operated freestanding base.

Main Features

- All major components may be easily accessed from the front.
- THERMODUL connection system creates a seamless work top when units are connected to each other thus avoiding soil penetrating vital components and facilitating the removal of units in case of replacement or service.
- Unit constructed according to DIN 18860_2 with 70 mm recessed plinth.
- Temperature in the cupboard can be set through a thermostat to suit different requirements. The maximum temperature is 120°C.
- Equipped with a core temperature probe, suitable also for low temperature cooking.
- Unit can be installed below modular top appliances, designed to keep the food warm, with the capability to cook as well.

Construction

- IPX5 water resistance certification.
- 2 mm top in 1.4301 (AISI 304).
- Flat surface construction with minimal hidden areas to easily clean all surfaces
- Storage space in the base of the appliance accepts GN1/1 containers.
- Internal frame for heavy duty sturdiness in stainless steel.

Optional Accessories

- Stainless steel side panel, 900x700mm, freestanding PNC 912512 ☐
- Stainless steel front kicking strip, 800mm width PNC 912634 ☐
- Stainless steel side kicking strip left and right, freestanding, 900mm width PNC 912657 ☐
- Stainless steel side kicking strips left and right, against the wall, 900mm width PNC 912660 ☐
- Stainless steel side kicking strip left and right, back-to-back, 1810mm width PNC 912663 ☐
- Stainless steel plinth, against wall, 800mm width PNC 912939 ☐
- Stainless steel plinth, freestanding, 800mm width PNC 912958 ☐
- Stainless steel panel, 900x700mm, against wall, left side PNC 913101 ☐
- Stainless steel panel, 900x700mm, against wall, right side PNC 913105 ☐
- Back panel, 800x450mm, for bases one-side operated PNC 913167 ☐

APPROVAL:



Experience the Excellence
www.electroluxprofessional.com



Electrolux
PROFESSIONAL

**Modular Cooking Range Line
thermaline 90 - 800 mm Holding Cabinet
with 2 drawers, GN conform, 1 Side - H=450**

- Stainless steel side panel, left, H=700 PNC 913222 ☐
- Stainless steel side panel, right, H=700 PNC 913223 ☐
- Side reinforced panel only in combination with side shelf, for freestanding units PNC 913260 ☐
- Side reinforced panel only in combination with side shelf, for against the wall installations, left PNC 913267 ☐
- Side reinforced panel only in combination with side shelf, for against the wall installations, right PNC 913269 ☐
- Side reinforced panel only in combination with side shelf, for back-to-back installations, left PNC 913275 ☐
- Side reinforced panel only in combination with side shelf, for back-to-back installation, right PNC 913276 ☐



**Modular Cooking Range Line
thermaline 90 - 800 mm Holding Cabinet with 2 drawers, GN conform, 1
Side - H=450**
The company reserves the right to make modifications to the products
without prior notice. All information correct at time of printing.

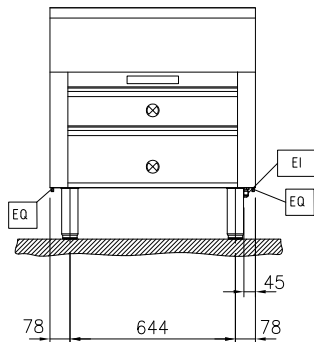
2025.06.12



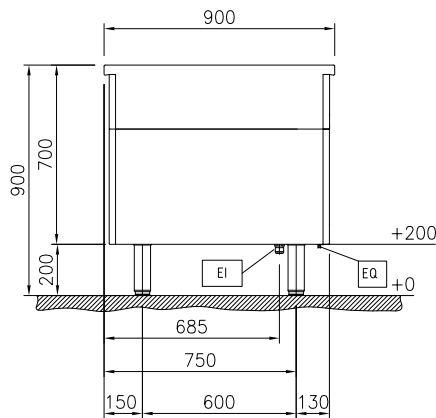
Electrolux
PROFESSIONAL

Modular Cooking Range Line
thermaline 90 - 800 mm Holding Cabinet
with 2 drawers, GN conform, 1 Side - H=450

Front

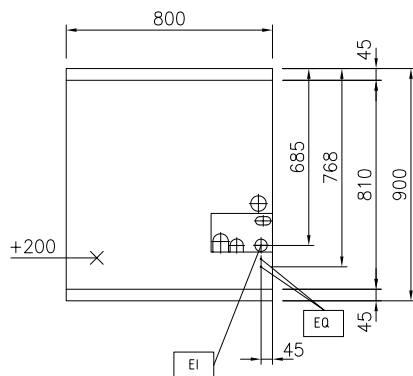


Side



EI = Electrical inlet (power)

Top



Key Information:

External dimensions, Width:

589467 (MC0ACAHOBO) 800 mm

External dimensions, Depth: 900 mm

External dimensions, Height: 450 mm

Cupboard Cavity Dimensions (width): 650 mm

Cupboard Cavity Dimensions (height): 325 mm

Cupboard Cavity Dimensions (depth): 530 mm

Cabinet temperature range: 30-120 °C

Net weight: 44 kg

Sustainability

Current consumption: 4.35 Amps



Modular Cooking Range Line
thermaline 90 - 800 mm Holding Cabinet with 2 drawers, GN conform, 1
Side - H=450
The company reserves the right to make modifications to the products
without prior notice. All information correct at time of printing.

2025.06.12